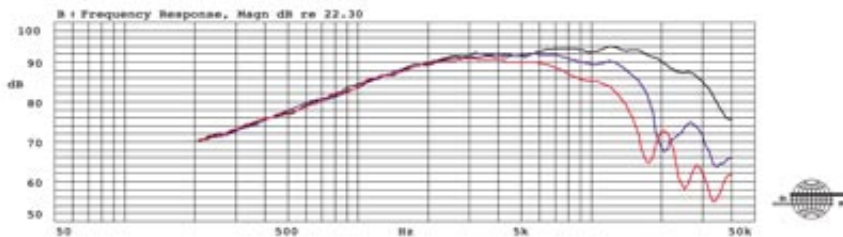


MD 330 D

Frequency response • on-axis, 30° and 60° off-axis



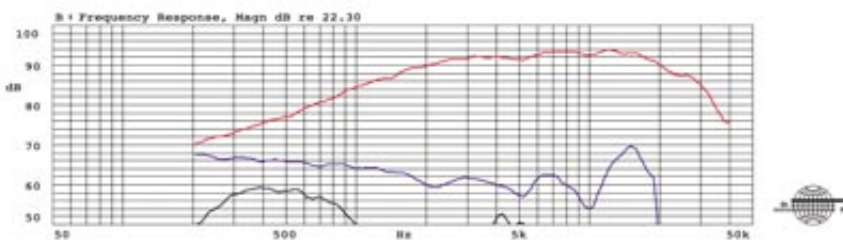
Thick line: on-axis response
Dashed line: 30° horizontal
Thin line: 60° horizontal

Measurement conditions

Level: 2.83 V
Distance: 1 m

Measured in a large baffle

Frequency response • 2nd and 3rd harmonic distortion



Thick line: on-axis response
Dashed line: 2nd harmonic
Thin line: 3rd harmonic

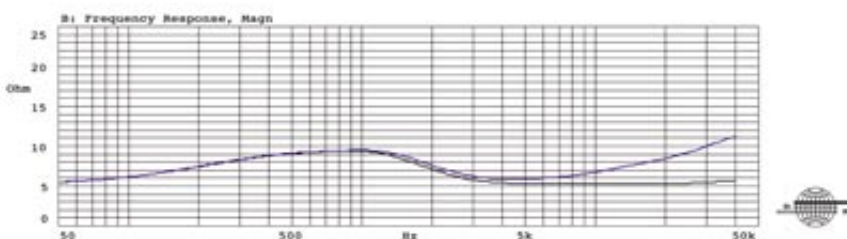
2nd and 3rd harmonic raised 20 dB

Measurement conditions

Level: 2.83 V
Distance: 1 m

Measured in a large baffle

Impedance • with and without impedance correction circuit



Thick line: impedance, free air
Thin line: impedance, free air with compensation

See drawing below.

Measurement conditions

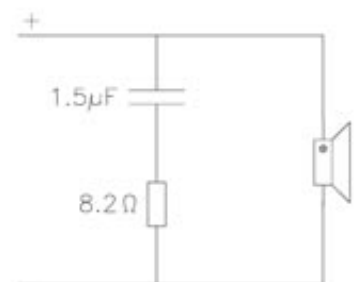
Level: 0.2 V

Driver in free air

The MD-330 D is characterized by a smooth frequency response and extraordinarily good dispersion to above 20 kHz with a well behaved high frequency roll-off.

The distortion is extremely low and will be further reduced when combined with a crossover. This is a necessity if absolute high-end reproduction is required in the sensitive tweeter frequency area.

The impedance curve is extremely linear, especially when an impedance correction circuit is used. This, in combination with the low resonance frequency, makes crossover design a less complicated task and makes the driver an easy load for the amplifier.



Impedance correction circuit

MD 330 D

Technical Specifications

Thiele Small Parameters:		Magnet and Voice Coil	
Nominal Impedance (Znom):	8 Ohm	Voice coil diameter (dc):	28mm
DC Resistance (Re):	5.2 Ohm	Voice coil height (hc):	2.8mm
Voice Coil Inductance (Le):	0.07 mH	Voice coil layers (nc):	2
Resonance Frequency (fs):	750 Hz	Magnetic gap height (hg):	2.5mm
Mechanical Q Factor (Qms):	0.33	Linear excursion:	0.3mm (peak to peak)
Electrical Q Factor (Qes):	0.5	Max. excursion:	3.2mm (peak to peak)
Total Q Factor (Qts):	0.2	Magnet weight (wm):	0.7 kg
Mechanical Resistance (Rms):	kg/s	Power Handling	
Moving Mass (incl. air load, Mms):	0.45 g	Nominal long term IEC:	130W (crossover dependent)
Suspension Compliance (Cms):	- mm/N	Transient (10ms):	1000W
Effective Dome Diameter (d):	31.3 mm	Mechanical Properties	
Effective Piston Area (Sd):	7.7 cm squared	Net Weight:	1.6 kg
Equivalent Volume (Vas):	- l	Overall dimension:	140.1 mm diameter x 66mm
Force Factor (Bl):	4.6 Tm		
Recommended Frequency Range:	2000 - 30000 Hz		